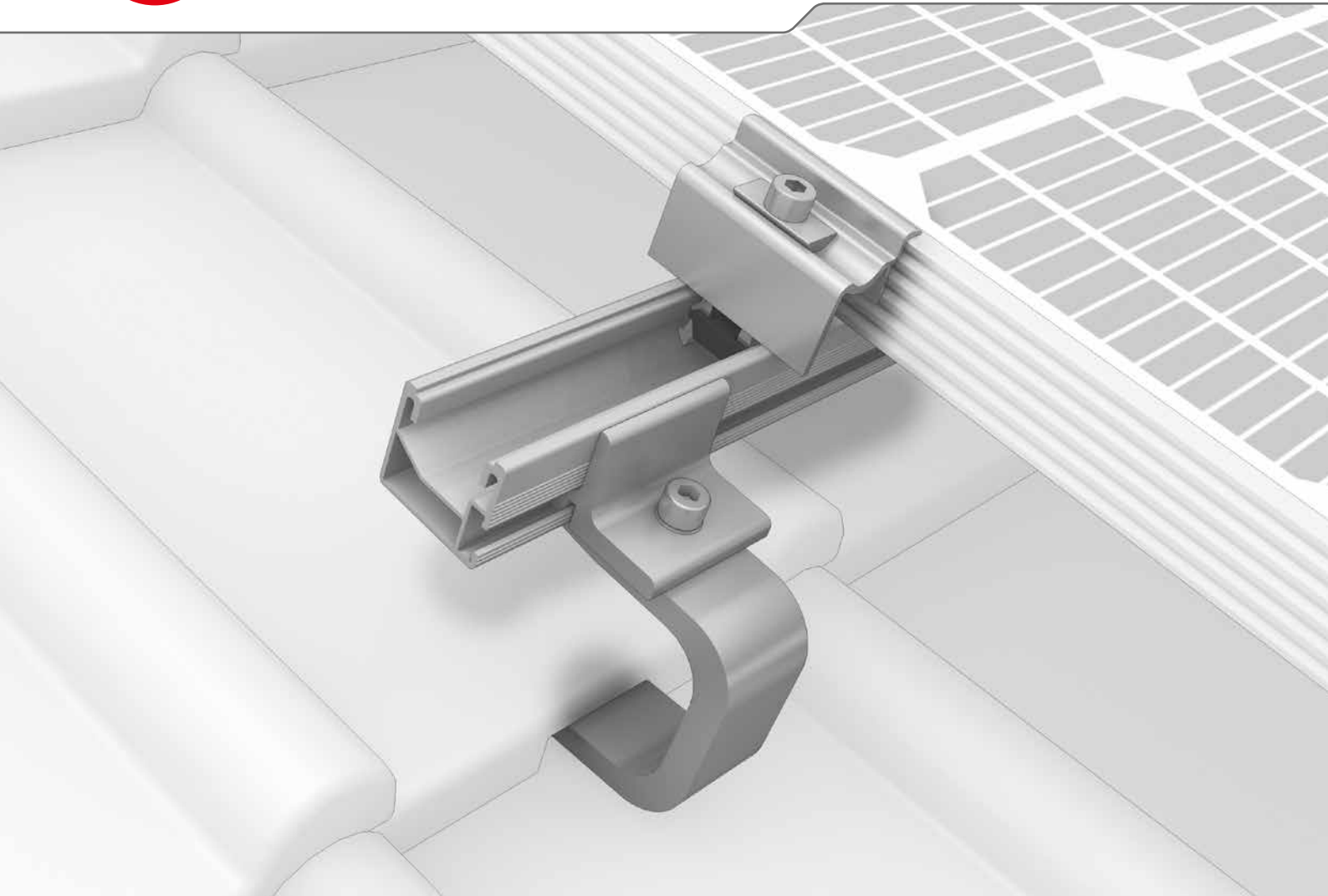




SingleRail System



- ▶ Quick and low-cost with direct lateral connections to the rail including customised height adjustment
- ▶ Secure snap-in assembly – without needing to be screwed into the base plate
- ▶ The SingleRail in combination with CrossHook roof hooks is very durable and versatile



Roof fastenings



SingleHook 1.1

- ▶ For pantiles
- ▶ Easy height adjustment with slotted bore hole
- ▶ Also suitable for narrow rafters
- ▶ Connects directly to SingleRail



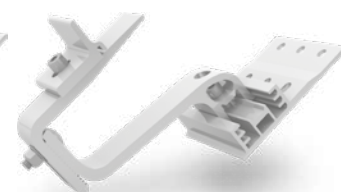
SingleHook FT

- ▶ For flat tiles and pantiles
- ▶ Applicable on small rafters and independent from rafters
- ▶ Connects directly to SingleRail



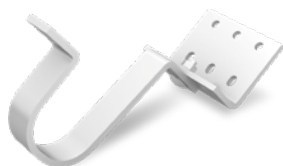
CrossHook 35

- ▶ For pantiles
- ▶ Height and side adjustable
- ▶ Also suitable for narrow rafters



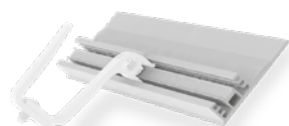
CrossHook 45

- ▶ For pantiles
- ▶ Height and side adjustable at base plate and bracket
- ▶ Also suitable for narrow rafters



SingleHook Vario

- ▶ For flat tiles and pantiles
- ▶ Height-adjustable at rail connection and battens
- ▶ Connects directly to SingleRail



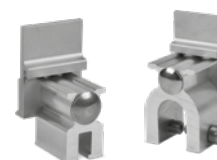
CrossBoard

- ▶ The easy solution for nogging, skylights etc.
- ▶ Complements CrossHook 35 and 45



Hanger bolts and solar fasteners

- ▶ For trapezoidal/corrugated sheet, corrugated fibre cement roofs
- ▶ For steel or wood

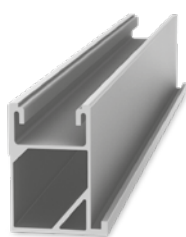
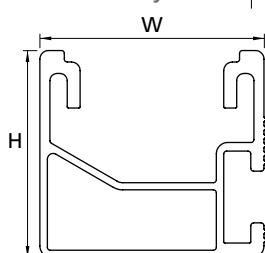


Standing seam clamps

- ▶ For many different seam types
- ▶ Direct lateral connection

Technical data

SingleRail	Light 36	36	50
Figure			
Material	Aluminium (EN AW-6063 T66)		
W = width [mm]	39.4	39.4	39
H = height [mm]	36	36	50
Lengths [m]	1.15/2.10/3.25/4.30/5.40	2.10/3.25/4.30/5.40	5.40
Weight [kg/m]	0.67	0.76	1.0
Second rail layer	SingleRail or SolidRail		



SingleRail 63:
For heavy loads and large spans!