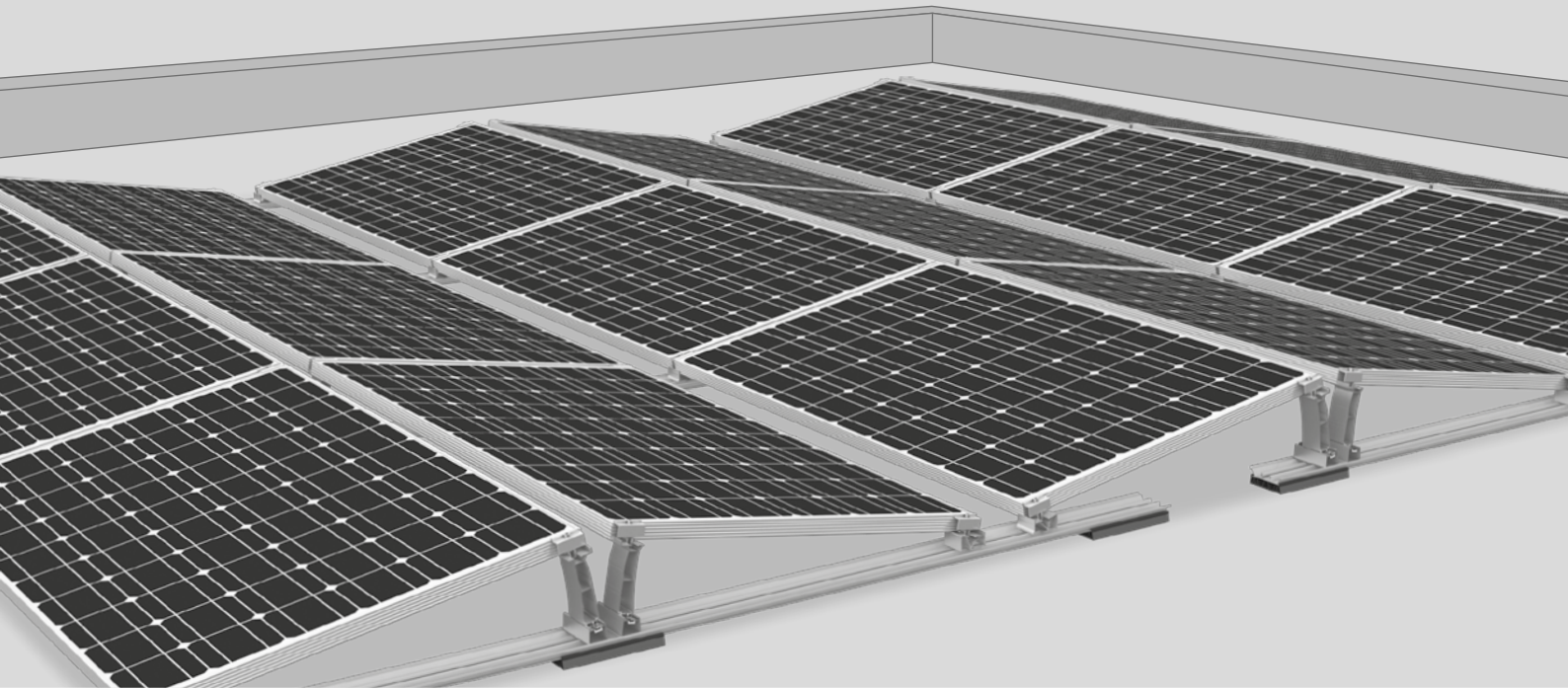




# D-Dome V 10° System

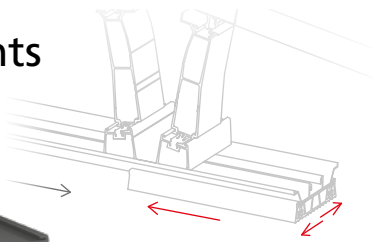
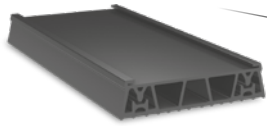
## The double-sided elevation



- ▶ Clearly ballast- and component-optimized system due to better friction coefficient of the flexible support pad
- ▶ Simultaneous assembly of modules and mounting system as well as reduced screw connections ensure faster installation
- ▶ Lower logistics costs due to lower transport volume

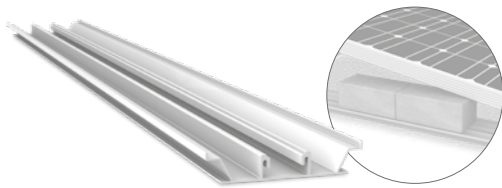


## Components



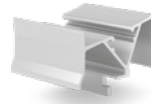
### Mat V

- ▶ Flexible Mat V made of EPDM – only 1 size and 1 variant (no aluminium lamination required)
- ▶ Absorbs and compensates for tolerances
- ▶ Friction coefficients reduce ballast



### Rail mounting rail

- ▶ Integrated ballast tray almost eliminates the need for additional components
- ▶ Short rails help compensate for roof tolerance



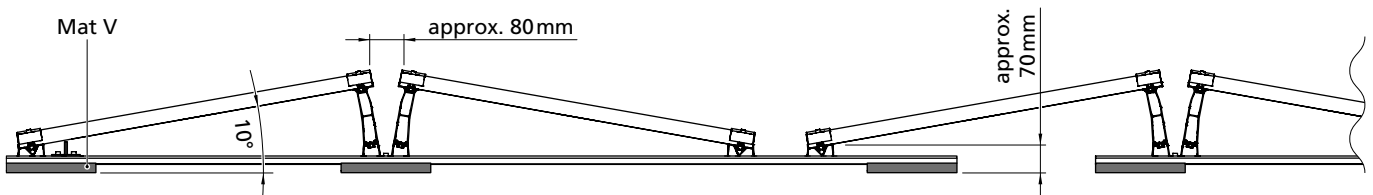
### Dome V elevation

- ▶ Innovative geometry and connections to accommodate tolerances
- ▶ Single screw connection and fast screw-in assembly of the SD with fixation via module clamp
- ▶ Low transport volume



### Universal module clamps: MiniClamp MC/EC

- ▶ Clamping range 30 - 50 mm
- ▶ Compatible with MiniRail and all Dome V Systems
- ▶ Optional: Equipotential bonding with TerraGrif possible



## Technical data

	D-Dome V
Scope of application	Flat roofs $\leq 5^\circ$ with single ply membrane or bituminous roof covering, also on concrete, gravelled or green roofs
Fastening type/roof fixture	Ballasted; no roof penetration for inclination $\leq 3^\circ$
Requirements	<ul style="list-style-type: none"> <li>▶ Permissible module dimensions (L x W x H): 1386 - 2080 x 985 - 1053 x 30 - 50 mm</li> <li>▶ Minimum system size: 2 supports (4 modules)</li> <li>▶ Module approved for corner clamping (see <a href="http://k2-systems.com/en/approved-modules">k2-systems.com/en/approved-modules</a>)</li> </ul>
Technical specifications	<ul style="list-style-type: none"> <li>▶ Thermal separation after a maximum of 15.5 m</li> <li>▶ Minimum distance to the edge of the roof 600 mm</li> </ul>
Inclination angle	10°
Material	<ul style="list-style-type: none"> <li>▶ Mounting rails, Peak, Basis, SD and MiniClamps: Aluminium EN AW-6063 T66 and AW-6082 T6</li> <li>▶ Mat V protective mat: EPDM</li> <li>▶ Small parts: stainless steel (1.4301) A2-70</li> </ul>